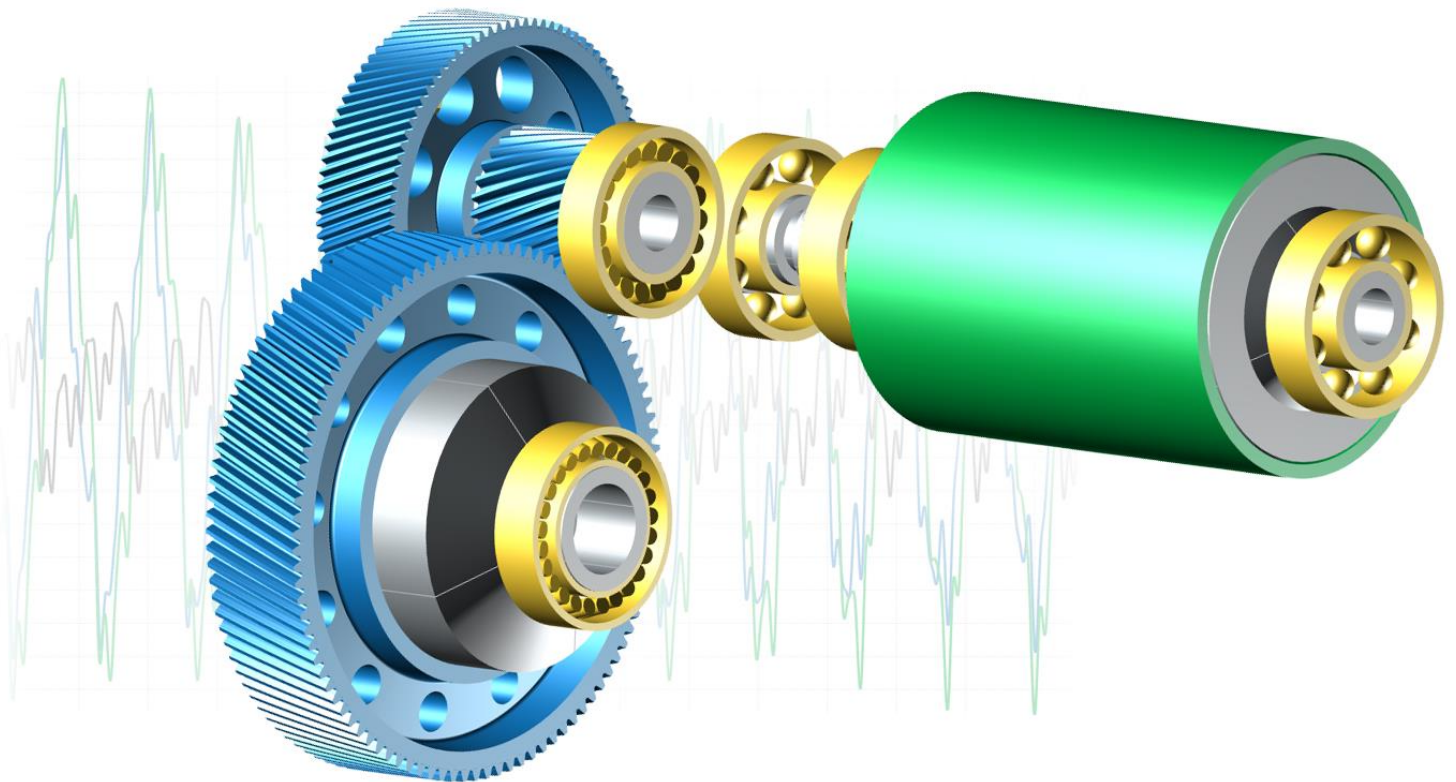


## Special Training

KISSsoft System Module:  
System Dynamics

1 Live Stream Session



# Calculations and optimization of the dynamic properties of a gearbox

## Modal Analysis and Characteristic Frequencies

- Calculating system eigenfrequencies
- Calculating different characteristic frequencies of gears, bearings and shafts
- Considering additional excitation frequencies
- Frequencies analysis in a Campbell Diagram

## Forced Response

- Calculation settings for consideration of gear meshing forces, unbalanced masses and torque ripples
- Calculating the speed dependent dynamic factor for all active gear pairs
- Module specific settings for postprocessing the output results
- Outputs of dynamic bearings forces and moments in the time and frequency domains
- Outputs of shaft responses in the time and frequency domains
- Outputs of gear mesh results in the time and frequency domains
- Generation of the Campbell diagram for bearing forces and moments

